

# Charging solutions for passenger transportation

**-chargepoint+**

Ease the transition to electric with ChargePoint solutions



[chargepoint.com](https://www.chargepoint.com)



As the world shifts toward e-mobility, transit agencies are leading the charge when it comes to adopting zero-emission technologies — including electric buses.

Sustainable transportation creates a smoother, greener experience for the communities bus operators serve.

**What's good for people and the planet is also good for business.** Advances in technology and widely available funding to help defray implementation costs make going electric a practical decision. Getting there, however, requires strategic planning to select the most appropriate vehicles, execute an optimum depot design for bus charging, navigate funding options and regulatory requirements, and achieve scale at the right pace — all without disruption to the services your communities count on.

Read on to learn more about the key components of electrification, including **software, telematics, charging stations and support services**. Discover how partnering with an industry expert such as ChargePoint can help streamline your electric transition, allowing you to meet the needs of your fleet today while building a foundation for the future.



Operators can expect emissions reductions of 50% or more after making the switch to zero-emissions buses (ZEBs).



# Tap into deep expertise to design a custom implementation

The road to electrification can look different for every bus operator. Fleet managers must be careful to choose charging solutions that best fit their operating requirements. We can work with you to **design an optimal deployment strategy for today with customizable, easy-to-use charging solutions** that can scale with you as your electric program evolves.

## Design and planning

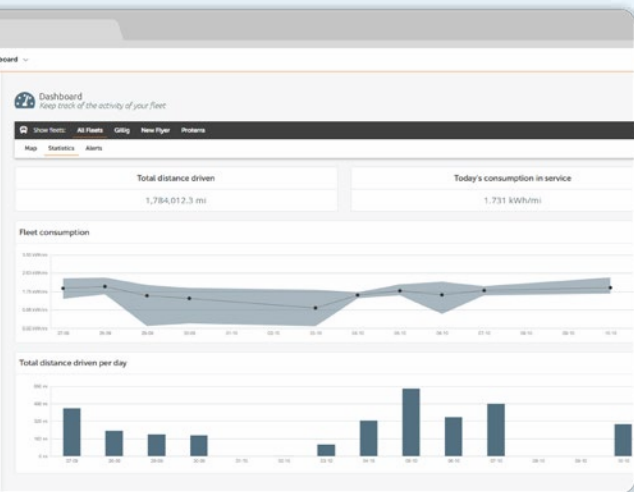
During a site visit, we'll analyze your existing fleet size, types of vehicles and fuel in use, and route data, including arrival and departure times

as well as trip lengths, to model your operational requirements. We'll also examine your site's infrastructure to ensure your electrical capacity matches your charging needs.

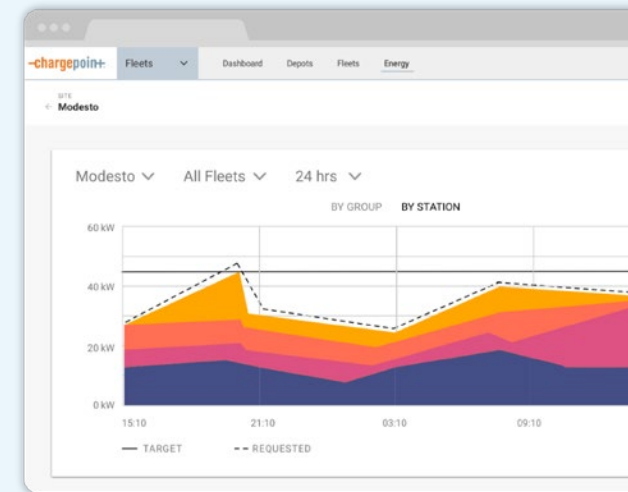
## Implementation

Once your requirements and site design are in place comes the challenge of managing the installation of your charging stations. Not to worry — we've got you covered there, too. From infrastructure design to equipment procurement to contractor negotiation and construction, we can manage the entire process to keep you on time and within budget.





Charger	Vehicle	Fleet	Status	Trip	Trip Length	SOC	Estimated Range (mi)	Pull Out	Charge Com.
A-Port 1	8935	Box Truck	Charging	7171	170	82%	115	05:10	04:45
A-Port 2	8936	Box Truck	Ready	7175	85	80%	129	13:13	13:13
B-Port 1	8937	Box Truck	Ready	7173	160	80%	129	08:00	10:10
C-Port 2	8938	Box Truck	Charging Late	7181	120	16%	38	07:27	09:02
D-Port 2	8939	Box Truck	Charging	7171	180	20%	38	13:10	12:45
East Depot Ch.	8940	Box Truck	Charging	7179	123	10%	12	08:55	08:00
E-Port 2	8942	Box Truck	Ready	7162	120	73%	129	05:10	06:00
F-Port 1	8943	Box Truck	Charging	1215	112	80%	115	13:13	13:13
G-Port 1	8944	Box Truck	Ready	1210	150	91%	120	08:00	07:30
G-Port 2	8945	Box Truck	Charging	7171	150	20%	38	13:10	12:45
East Depot Ch.	8946	Box Truck	Charging	7179	123	10%	12	08:55	08:00
H-Port 1	8950	Box Truck	Ready	7162	120	73%	129	05:10	06:00
H-Port 2	8953	Box Truck	Charging	1215	112	80%	115	13:13	13:13
I-Port 1	8954	Box Truck	Ready	7175	85	80%	129	13:13	13:13
I-Port 2	Unknown	Box Truck	Charging	-	-	-	38	-	-



## Software and telematics

Our comprehensive fleet operations, charging management and telematics software solutions offer complete visibility into and control over every aspect of your fleet service, from route planning to time of charge — regardless of fueling type. Our OEM-agnostic charging management software offers full integration with your existing fleet systems and works with any charging station, giving you the flexibility to manage a multifaceted implementation using a single platform.

## Charging stations

Count on maximum uptime with ChargePoint® networked DC fast charging stations. Our solutions work with all electric bus makes and models, ensuring that you will have a seamless transition to electric. You'll also get unparalleled reliability with proactive station monitoring and field-serviceable, modular components.

## Services and support

To protect your investment, we offer unmatched support services, including 24/7 monitoring and one-day response times, as well as a 10-year warranty program.



## Ensure a smooth electric transition

As you embark upon your electrification journey, you want to be confident that your charging solutions will work seamlessly after installation. To maintain predictable fleet operations as you electrify — with the flexibility to deploy any e-bus from any manufacturer and scale over time — **future-ready charging solutions designed and tested for interoperability are essential.**

ChargePoint actively communicates with partners across the sustainable transportation ecosystem to develop solutions that work together to drive zero-emission transportation forward. We engage these partners to conduct interoperability testing long before our solutions are ever deployed to give you the peace of mind you need to make the transition to electric. Over 8,000 transit buses from approximately 80 different vehicle manufacturers, including all major bus manufacturers, are now being monitored by ChargePoint telematics.

In addition, all of our solutions are available a la carte or as a comprehensive end-to-end package, giving you the flexibility to design an implementation that best fits your business.

# 2,900+

charging stations under management  
from 30 manufacturers

# 8,000+

transit buses being monitored by  
ChargePoint telematics





## Take advantage of incentives

Over \$5.5 billion in funding is available for EV charging infrastructure through federal and local programs. Navigating and applying for these programs can be daunting, so we're here to help you identify and apply for programs you qualify for. ChargePoint will put our deep understanding of the policy environment to work for you, identifying incentives your fleet electrification strategy can benefit from.

# \$5.5B+

in funding through federal and local programs

# Take the guesswork out of fleet management

The road to electric goes beyond buses and charging stations. Deploying an electric fleet without a powerful software solution is like driving without a map. **Innovative, future-ready software can help you unlock the full potential of your fleet.**

Implement ChargePoint charge management, fleet operations and telematics software for a comprehensive solution or integrate charging management seamlessly into your existing systems to automate charging schedules and ensure buses are always charged up and ready for their routes.



## Charging management

Monitor and proactively oversee the health and uptime of charging stations, even across multiple locations. Keep tabs on status, faults and more to securely manage stations regardless of manufacturer. Maximize fuel savings with energy management features and lower energy costs by deferring charging to off-peak hours.

## Fleet operations

Get complete visibility into all fleet operations using real-time monitoring and role-based alerts. Scale operations as your charging demand grows, minimizing cost and disruption to day-to-day operations. Access built-in analytics to optimize overall fleet performance and run custom reports to improve efficiency, increase uptime and understand when to scale your implementation.

## Telematics

Get complete visibility into all aspects of your fleet, including vehicle location, battery health, range status, charging efficiency and more. Deep insights on performance, at both the individual vehicle level and the fleet level, allow you to increase uptime and utilization, prevent breakdowns and save costs.



## Maximize performance with solutions that are built to last

Millions of people rely on dependable transportation services to get where they need to go. To enable these life-sustaining trips, **charging an electric bus must be as easy as refueling its diesel counterpart.** That's why it's important to select technology that is intuitive, reliable and resilient.

Deploy networked ChargePoint DC fast charging stations tailored to meet your specific needs. Our resilient stations undergo rigorous environmental testing to ensure a smooth deployment. You'll get unparalleled reliability with proactive station monitoring and field-serviceable, modular components.





## Flexible

The ChargePoint Express Plus charging platform provides up to 500 A of current and the ability to add power to stations for up to 500 kW of power. Choose from flexible configurations, standard connectors and a variety of mounting options to enable depot, on-route, workplace and other types of charging — for any vehicle type. The optional pantograph connector makes bus charging easier in space-constrained depots. Charge two vehicles simultaneously using optimal dynamic power sharing, and continuously charge vehicles one after another at maximum power.

## Reliable

Count on maximum uptime from time-tested, purpose-built charging stations. Reduce complexity with equipment that works seamlessly with your existing systems to keep operations running smoothly. Modular hardware architecture with field-replaceable components simplifies servicing and upgrades.

## Future-ready

Adapt to the evolving transportation industry and optimize your EV footprint as you scale your fleet with greater efficiency over time. Add power, capacity or both, giving you the flexibility to scale your charging infrastructure as your electric fleet grows.



# Safeguard your investment

Have peace of mind at every stage of the electrification journey — even after your charging stations are in the ground. **The decisions you make today will impact your community for decades to come**, so choosing an e-mobility solution and partner that is going to be around for the long run is critical. Once your electric fleet is up and running, ChargePoint will still have your back, with comprehensive station support, monitoring and maintenance services to meet the needs of your essential fueling operations.

In addition, you can protect your investment with the ChargePoint AssurePro® support. Get 24/7 proactive monitoring, rigorous service level agreements (SLAs) and mission-critical spares management to ensure maximum uptime.

“

They were able to check all of the boxes for our requirements, but most importantly, to go the long haul and meet our goals. There's no better group of people to maintain the equipment than the people who built the equipment.”

**Henry Lukasik**

Director of Maintenance, Pinellas Suncoast, Transit Authority







## Go electric with confidence

With a fully integrated, scalable and complete electrification solution and over a decade at the forefront of EV charging innovation, it's no wonder that we have more than 700 transit and OEM customers (and counting) in Europe, North America and the Middle East.

For more than 16 years, we've focused solely on offering the best electric vehicle charging experience for everyone involved in the shift to electric mobility globally. EV charging is all we do, and we do it all.

### Ready to electrify your transit operation?

To help you move through your electrification journey, we've put together a detailed checklist especially for transit fleet operators. Take a look now and lead the charge in creating a cleaner, greener transportation sector.

[Download checklist](#)

[Get in touch with one of our experts](#)

ChargePoint, Inc. ("ChargePoint") reserves the right to alter product offerings and specifications at any time without notice. ChargePoint is not responsible, and disclaims any and all liability, for typographical or graphical errors, inaccuracies, or incompleteness that may appear in this document. This document does not expand or otherwise modify ChargePoint's terms and conditions of purchase, including but not limited to the warranty expressed therein.

Copyright © 2024 ChargePoint, Inc. All rights reserved. CHARGEPOINT is a U.S. registered trademark/service mark, and an EU registered logo mark of ChargePoint, Inc. ASSURE and CHARGEPOINT AS A SERVICE are U.S. registered trademarks of ChargePoint Inc. All other products or services mentioned are the trademarks, service marks, registered trademarks or registered service marks of their respective owners.

