

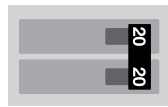
For Professional Electricians

Tips to install electrical service for ChargePoint Home

→ Start Here for Plug Installation

ChargePoint Home 12: 16A Station

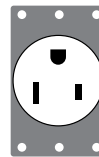
240V, 20A dedicated circuit required.
NEMA 6-20 outlet installed ground pin on top.



Tip: Requires a new, dedicated, non-GFCI two-pole circuit breaker

ChargePoint Home 25: 32A Station

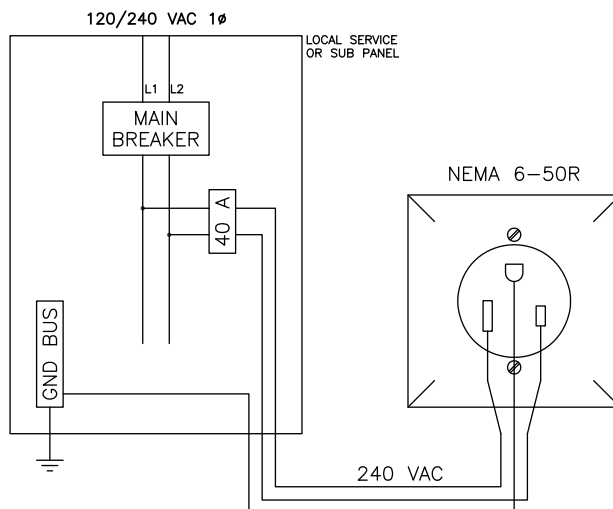
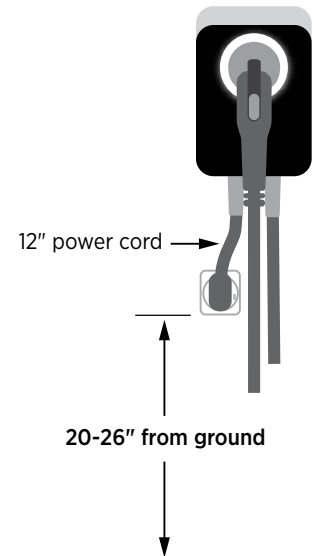
240V, 40A dedicated circuit required.
NEMA 6-50 outlet installed ground pin on top.



Tip: Requires a new, dedicated, non-GFCI two-pole circuit breaker

The NEMA outlet should be located **20-26"** from the ground. Refer to the installation template to decide where to install the station.

The power cord will not bend and is only 12" long (as per the National Electric Code for EV chargers), so ensure the outlet is installed close enough for the power cord to plug in.



240 VAC, SINGLE PHASE PANEL

- Neutral is not required at the outlet
- Install outlet with ground pin on top

→ Start Here for Hardwire Installation

ChargePoint Home 12: 16A Station
240V, 20A dedicated circuit required

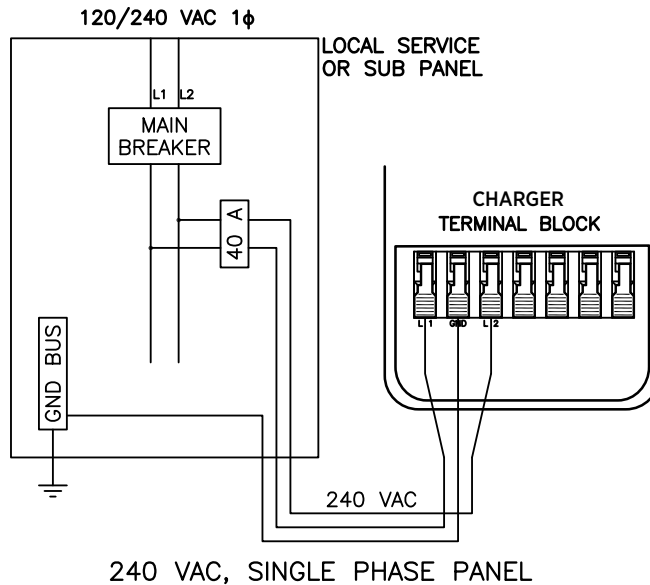


Tip: Requires a new, dedicated, non-GFCI two-pole circuit breaker

ChargePoint Home 25: 32A Station
240V, 40A dedicated circuit required



Tip: Requires a new, dedicated, non-GFCI two-pole circuit breaker

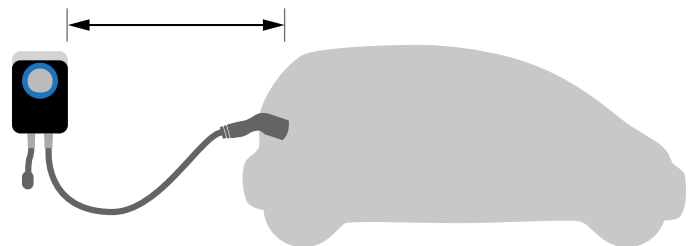


- Use 3/4" conduit
- Use appropriate fittings for connection
- Strip wire ends to 1/2"
- Insert wires fully into charger terminal block

→ For Both Hardwire and Plug

Ensure the homeowner has chosen an installation location that allows the charging cord to reach the car's charging port while still providing slack.

Charging cord reaches car without any tautness



→ Next Steps

Refer to the full install guide and template for the installation of the station.

Questions?

- Call U.S. and Canada toll-free +1.888.758.4389 (24 hours)
- Email support@chargepoint.com